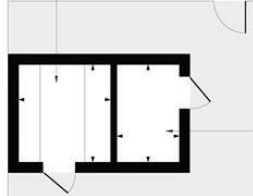


**Tennyson Avenue  
Motspur Park, KT3 6LZ**

**Offers In Excess Of £650,000 Freehold**



Home Office  
7'5 x 7'0  
(2.27 x 2.14m)



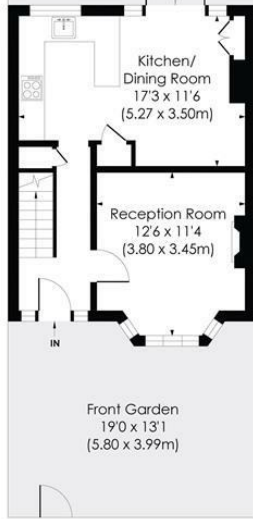
7'5 x 4'9  
(2.27 x 1.45m)

### TENNYSON AVENUE, KT3

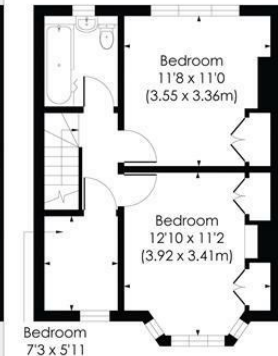
Approx. Gross Internal Floor Area  
**907 Sq. ft/84.23 Sq. m**  
(Including Home Office & Store)



Garden  
57'0 x 18'5  
(17.37 x 5.61m)



GROUND FLOOR



FIRST FLOOR



Energy Efficiency Rating		Current	Possible
Very energy efficient - lower running costs	A		
(81-91)	B		
(69-80)	C		
(55-68)	D		
(39-54)	E		
(21-38)	F		
(1-20)	G		
Not energy efficient - higher running costs			
England & Wales		89	71
EU Directive 2002/91/EC			



This floor plan has been prepared for the purpose of illustration only in accordance with the latest RICS code of measuring practice and is not to scale. All measurements and areas are approximate and whilst every effort has been made to ensure the accuracy of the plan contained here, no responsibility is taken for any error, omission or misstatement.

© Pixangle Property Marketing Ltd. info@pixangle.com Tel: 0208 870 2118

- Three Bedroom - Mid-Terrace 1930's House - 907sqft
- 0.4 Miles To Motspur Park Station And Shops
- Beautifully Presented Throughout
- Stunning Kitchen/Dining Room
- 57'ft South East Facing Garden With Home Office
- Separate Front Reception Room
- Modern Family Bathroom
- Potential To Extend S.T.P.P
- Council Tax Band - D
- EPC Rating - C

For Free Mortgage Quote and Best Mortgage Rates, call Ellisons Mortgage Advisor on 0208 944 9595



Although these particulars are believed to be correct, their accuracy is not guaranteed and they do not form part of any contract.

Celebrating 30 years  
of successful Sales and  
Lettings in Merton

